

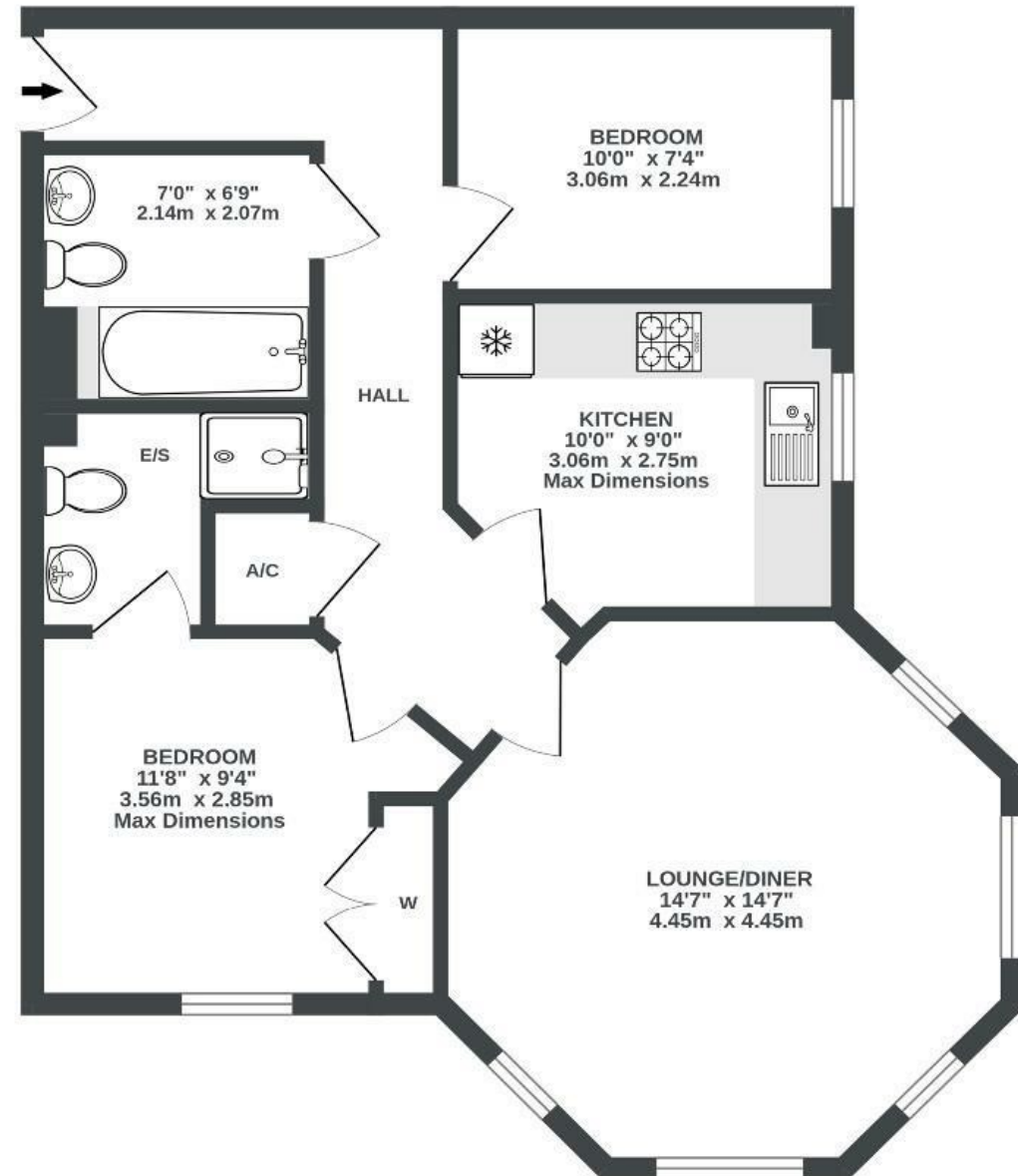
Latimer Close

BRISLINGTON

APPROXIMATE FLOOR AREA
57.1 SQM / 615 SQFT



GROUND FLOOR
615 sq.ft. (57.1 sq.m.) approx.



Illustrations are for reference purposes only, measurements are approximate, not to scale.

Boardwalk

Latimer Close

BRISLINGTON, BRISTOL

£

£230,000



BS4 4FG

zzz

2 Bedrooms



2 Bathrooms

"Latimer Close is above all, a really peaceful place to live. It has always felt incredibly private and calm which is so important for us. The flat has a beautiful octagonal living room with 7 large windows which is the bright centrepiece of the flat and our favourite space. With Sandy Park Road and the bus stop to town on the doorstep it really is such a lovely peaceful convenient place to live! We also have access to Nightingale Valley and the local allotments at the bottom of the close."

